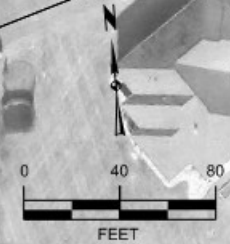
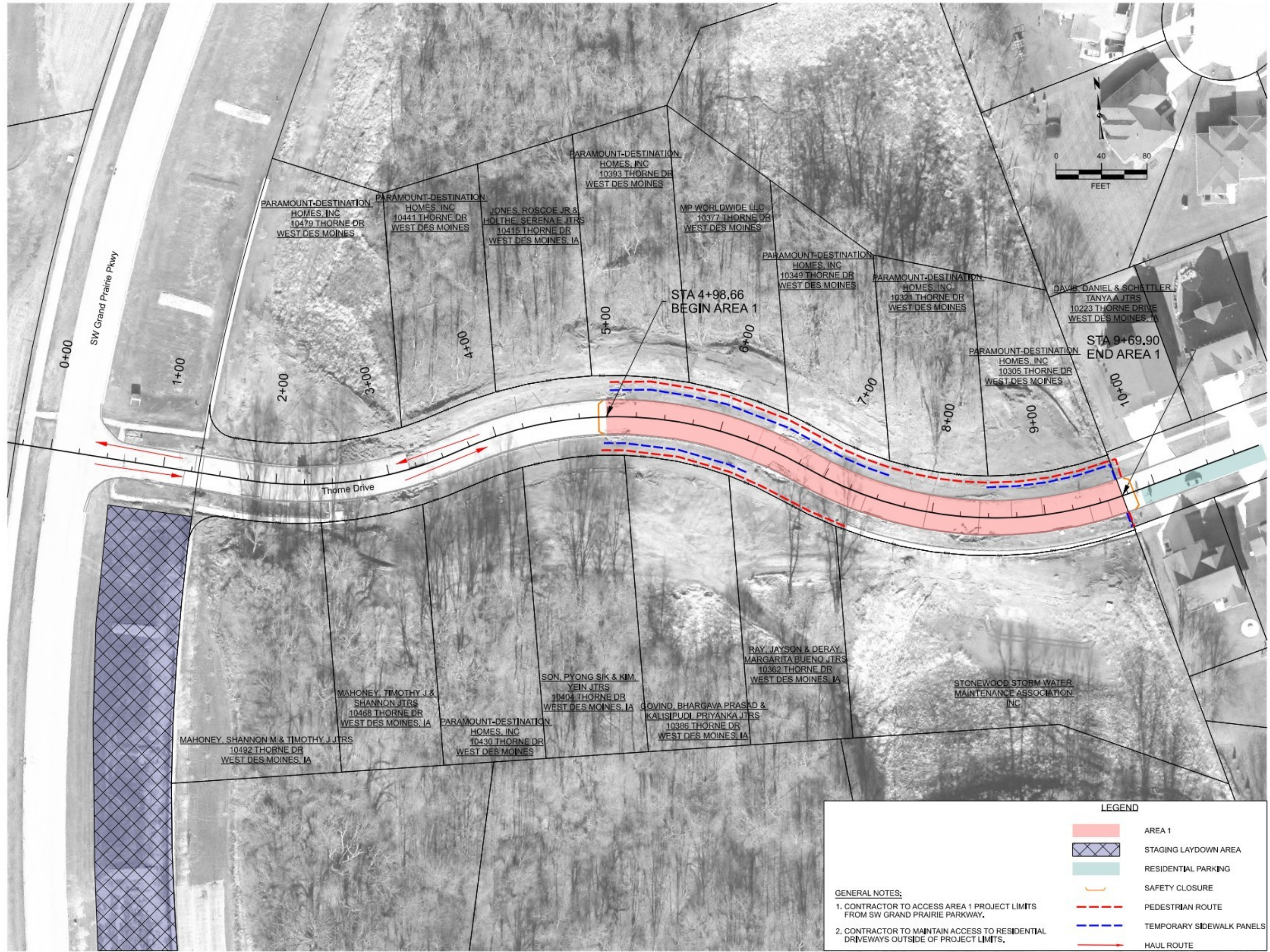


19/02/2028 10:39:01 AM
 1250801_01\ICAD\003_1250801_01.dwg
 R:\Projects\2025\1250801_01\ICAD\003_1250801_01.dwg
 19/02/2028 10:39:01 AM
 GEOM_THORNE - Plan 3 (Sheet)
 V:\Projects\2025\1250801_01\ICAD\003_1250801_01.dwg
 ORC\Colonia\Weg\PDF\plan3_SNA_Separates\2025\Final\1250801_01



MARK	REVISION	DATE	BY

STONEMOOD PAVEMENT REPAIRS

TRAFFIC CONTROL AND STAGING

WEST DES MOINES, IA

SNYDER & ASSOCIATES, INC.

2727 SW SNYDER BLVD
 ANKENY, IA 50023
 515-964-2020 | WWW.SNYDER-ASSOCIATES.COM



SNYDER & ASSOCIATES

Project No: 125.0801.01

Sheet J.3

LEGEND

	AREA 1
	STAGING LAYDOWN AREA
	RESIDENTIAL PARKING
	SAFETY CLOSURE
	PEDESTRIAN ROUTE
	TEMPORARY SIDEWALK PANELS
	HAUL ROUTE

GENERAL NOTES:

- CONTRACTOR TO ACCESS AREA 1 PROJECT LIMITS FROM SW GRAND PRAIRIE PARKWAY.
- CONTRACTOR TO MAINTAIN ACCESS TO RESIDENTIAL DRIVEWAYS OUTSIDE OF PROJECT LIMITS.

19/02/2025 10:39:40 AM
 Run Date: 12/12/2025 10:39:40 AM
 V:\Projects\1250801\1250801_01\1250801_01\1250801_01.dwg
 GEOM_TIMBER - Plan J5 (Sheet)
 V:\Projects\1250801\1250801_01\1250801_01\1250801_01.dwg
 ORCADigital\Wep\PDF_Plotting_SAA_saravadas_2024\Fin_Tables\table.tbl



SCHWARCK, AUSTIN LEONARD & BAILEY ANN JTRS
 1527 S TIMBER LN
 WEST DES MOINES

BANWART, JERALD R & DAWN M LIVING TRUST
 1471 S TIMBER LN
 WEST DES MOINES

DAVIS, MATTHEW L
 1455 S TIMBER LN
 WEST DES MOINES

OPV PROPERTIES LLC
 1464 S STONEWOOD DR
 WEST DES MOINES

HANSEN, JANEL R REVOCABLE TRUST
 10385 S STONEGATE DR
 WEST DES MOINES

HD3 LLC
 1383 S TIMBER LN
 WEST DES MOINES

HD3 LLC
 1347 S TIMBER LN
 WEST DES MOINES

HD3 LLC
 1336 S TIMBER LN
 WEST DES MOINES

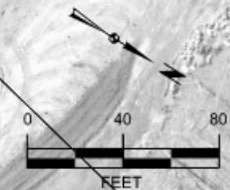
KIMBERLEY DEVELOPMENT CORP
 1392 S TIMBER LN
 WEST DES MOINES

STONEWOOD, INC
 1516 S TIMBER LN
 WEST DES MOINES

KIMBERLEY DEVELOPMENT CORP
 1480 S TIMBER LN
 WEST DES MOINES

KIMBERLEY DEVELOPMENT CORP
 1468 S TIMBER LN
 WEST DES MOINES

KIMBERLEY DEVELOPMENT CORP
 1444 S TIMBER LN
 WEST DES MOINES



LEGEND

	AREA 3
	STAGING LAYDOWN AREA
	RESIDENTIAL PARKING
	SAFETY CLOSURE
	PEDESTRIAN ROUTE
	TEMPORARY SIDEWALK PANELS
	HAUL ROUTE

GENERAL NOTES:

- CONTRACTOR TO ACCESS AREA 1 PROJECT LIMITS FROM SW GRAND PRAIRIE PARKWAY.
- CONTRACTOR TO MAINTAIN ACCESS TO RESIDENTIAL DRIVEWAYS OUTSIDE OF PROJECT LIMITS.

MARK	REVISION	DATE	BY

STONEWOOD PAVEMENT REPAIRS

TRAFFIC CONTROL AND STAGING

WEST DES MOINES, IA

SNYDER & ASSOCIATES, INC.

2727 SW SNYDER BLVD
 ANKENY, IA 50023
 515-964-2020 | WWW.SNYDER-ASSOCIATES.COM

Project No: 125.0801.01

Sheet J.5