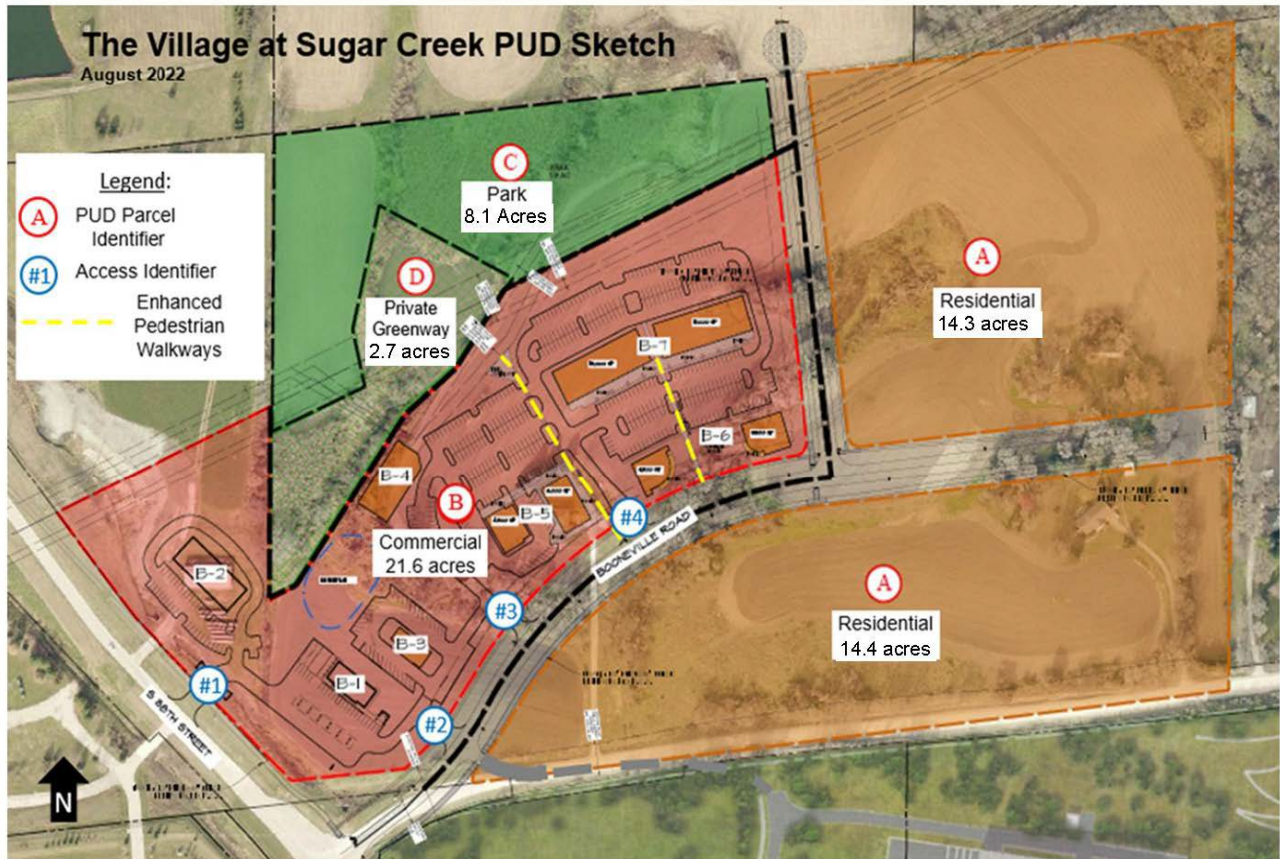


Exhibit A: PUD Sketch Plan



Village at Sugar Creek

Exterior Materials

Exhibit A

6/20/22

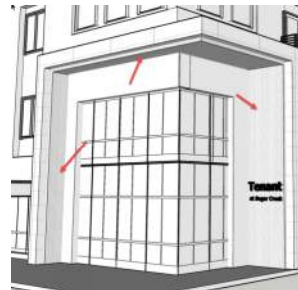
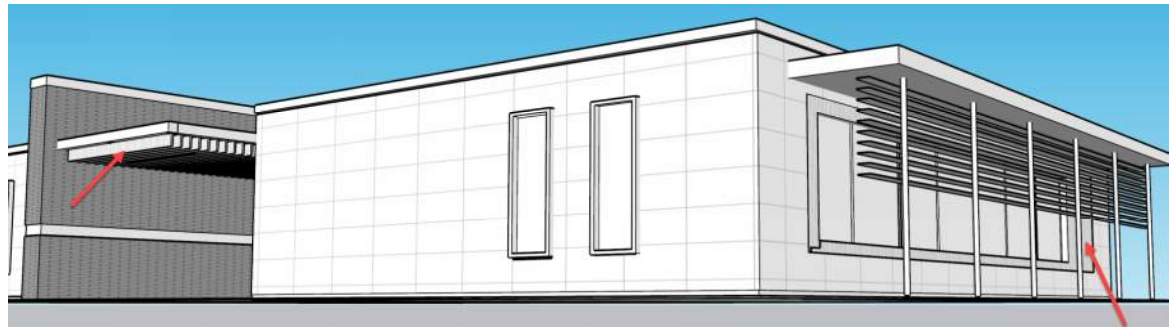
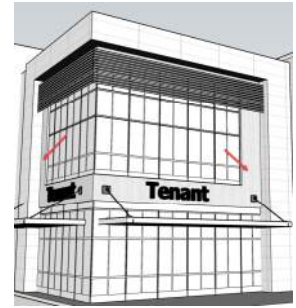
1.a. Each building features a timeless/contemporary framed 'U' exterior cladding element, typically black in color, which serves as a consistent anchor.



1.b. We've increased the frequency of top-of-wall terminations which feature a horizontal cantilever, typically located at a main entry. We've eliminated all pitched roof lines.



1.c. Wood accent used on all buildings.



1.d. Similar sun-shade solutions.

